



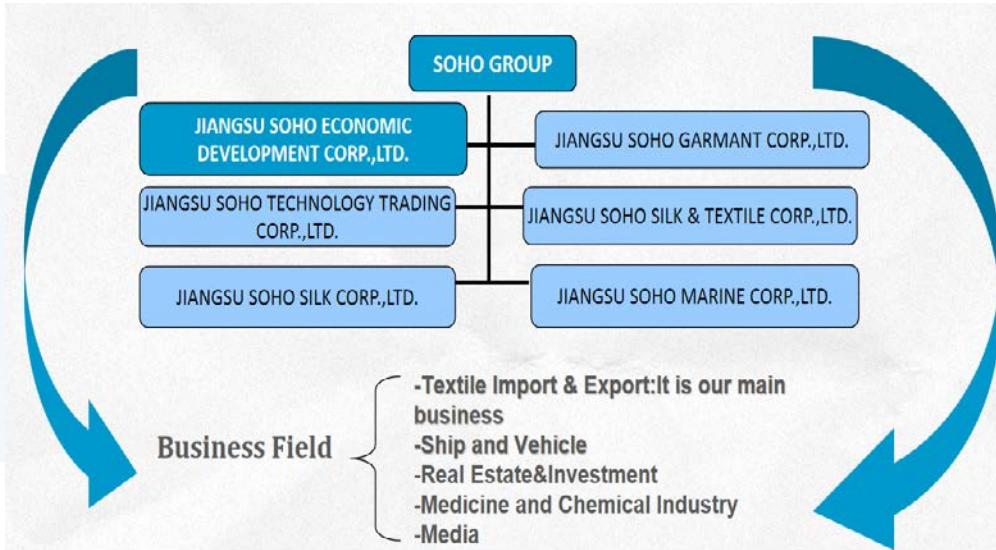
# JIANGSU SOHO ECONOMIC DEVELOPMENT CO.,LTD

Own Factories in Myanmar/Cambodia/China

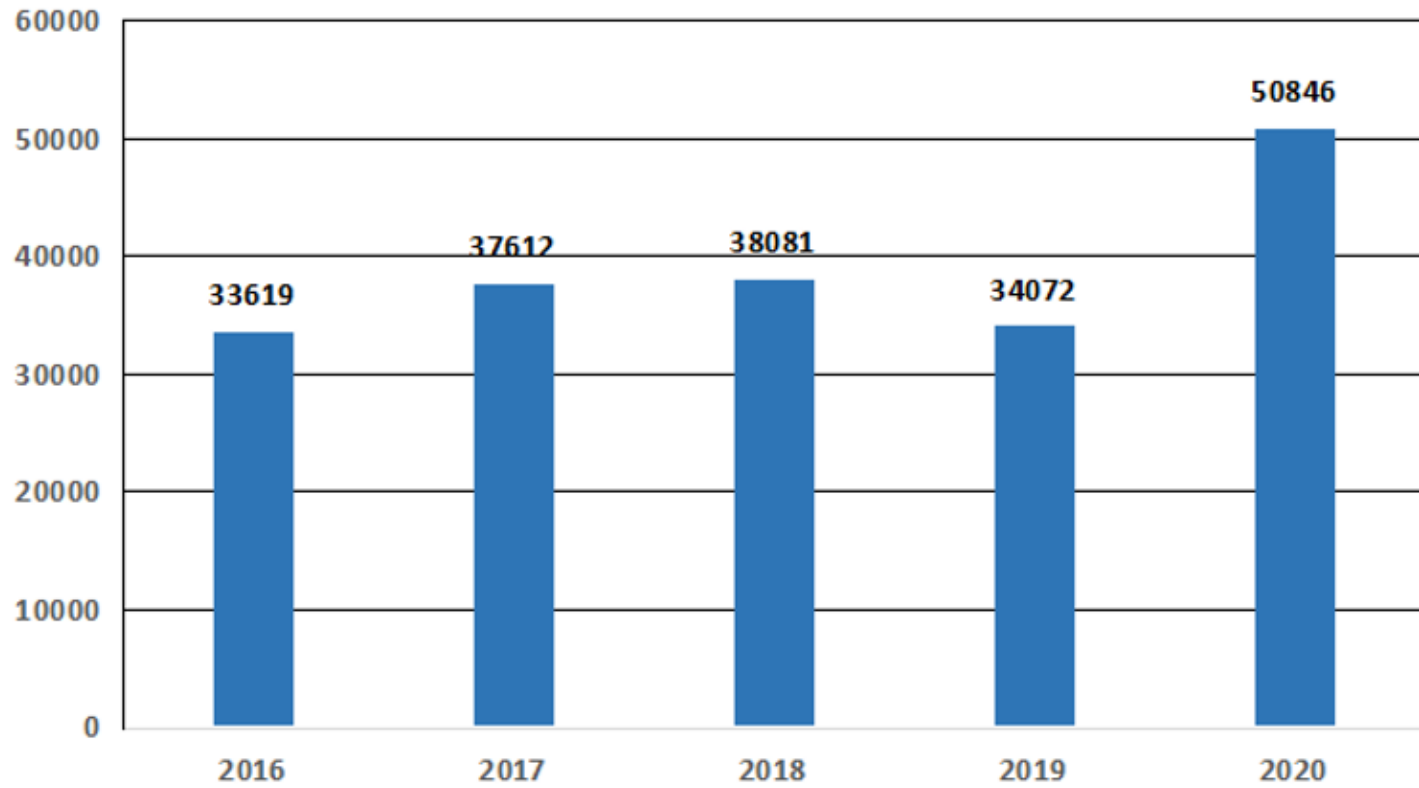
# SOHO INTRODUCTION



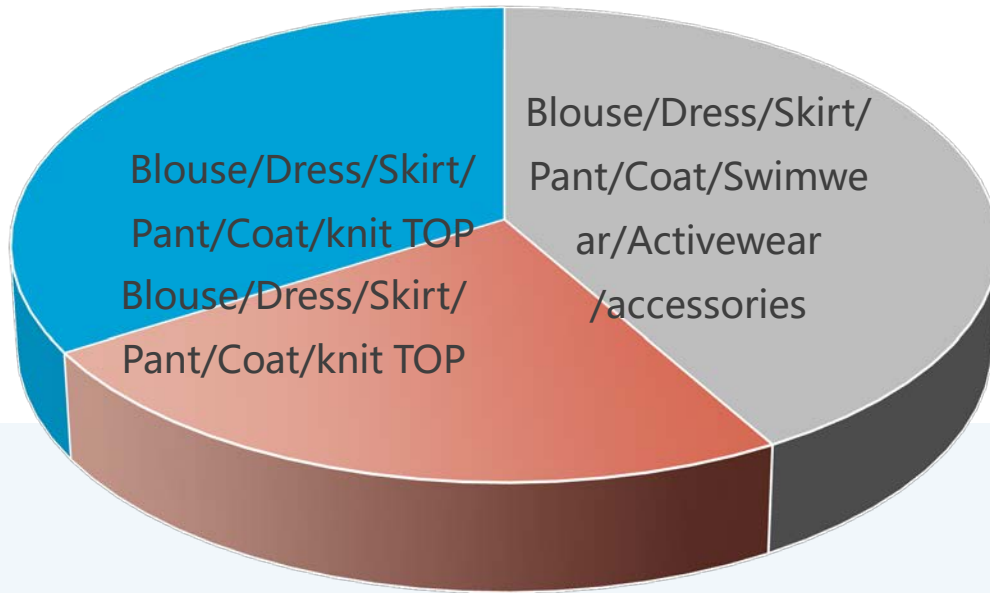
Jiangsu SOHO International Group Corp., was founded in October 1979, with the name of China Silk Company (Jiangsu branch). With business development, it was renamed as Jiangsu SOHO International Group Corp. on October 10, 2000. Its main businesses includes silk, textile clothing, electromechanical products for ship, light industrial commodity and mechanical equipments import and export trade. SOHO Economic Development co.LTD.is one of the main subsidiary of SOHO GROUP, which focused on ladies garments production and export , It owns factories in **Myanmar/Cambodia and China.**



SOHO IMPORT AND EXPORT VOLUME UNIT:\$10000

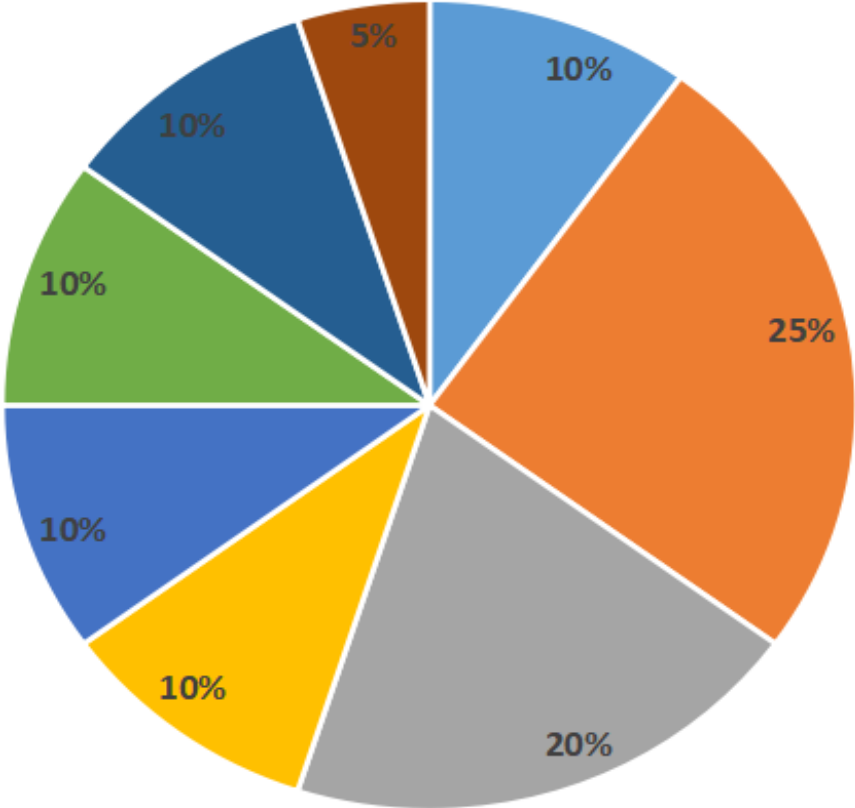


# Orders Percentage By Country In 2020



- China 50%  
Blouse/Dress/Skirt/Pant/Coat/Swimwear/Activewear /accessories
- Myanmar 20%  
Blouse/Dress/Skirt/Pant/Coat/knit TOP
- Cambodia 30%  
Blouse/Dress/Skirt/Pant/Coat/knit TOP

# Production Percentage By Series In 2020



- 10% SWEATER IN 2020
- 25% BLOUSE IN 2020
- 20% SKIRT&DRESS IN 2020
- 10% COAT IN 2020
- 10% PANT IN 2020
- 10% ACTIVE WEAR IN 2020
- 10% SWIM WEAR IN 2020
- 5% ACCESSORIES IN 2020

# Our Team



ership

alesman

I QC Team

Merchandiser

# Our Goal

Clients Interests Always To  
Be Number One



Provide Better Price/Better  
Quality/Better Service, Make  
a WIN-WIN Situation For  
Both Of US

# Our Products

Womenswear(Knit&Woven)

Menswear (Knit&Woven)

Swimwear

Accessories

Activewear



# Our Strengths

**A** Sample Room - Soho Owns Sample Design Room, Can Develop And Submit Sample Within The Time Required By Customers



# Our Strengths

**B**

Soho With A Cooperated Foreign Designer, We Can Design And Develop Sample Follow Fashion Trend Timely



# Our Strengths



## Soho Introduced 3D Cloud System, It Can Help Save Physical Sample And Fasten The Bulk Process



### How It Works

- 1 First things first: CLO is neither mobile app magical clothing-scanning device. It's design software that runs on your computer-desktop or laptop, Mac or PC.



### It Begins With a Body

- 2 It begins with a 3D body – avatar, body scan, or dress form, available in different shapes and sizes.



### And Then Patterns

- 3 Like real-life, 3D garments are made using 2D patterns. Import ones made in third-party 2D CAD systems, or draw them from scratch directly in CLO.



### Which are Sewn

- 4 Utilize our quick and easy sewing tools to pair each seam of the garment.



### And Finally, Simulate.

- 5 And last but not least, Simulate: Gravity is applied, patterns sewn and fabrics simulated.

# Our Strengths

**D** ◆ **RELIABLE COOPERATIONSHIP**  
national owned company background, sufficient financial strength

◆ **SHORT PRODUCTION LEADTIME**  
4-8 weeks depends on clients request and fabric status

◆ **FLEXIBLE ORDER QUANTITY**  
300-100000pcs are available

◆ **SUSTAINABLE FABRIC RANGE**  
covering GOTS, OCS, GRS, RCS, LENZING

◆ **WIDE PRODUCTION LINES**  
from Woman to man, from woven to knit, from hard to soft wearing, from garment to accessory

◆ **MAINLAND AND OVERSEAS FACTORY**  
have factories in China/Myanmar/Combodia

# Sustainability

SOHO take the sustainability as valued and got below certificated to respect our thoughts

1



2

OC-059 (24 Feb 2020-en)

## OneCert® International

OneCert International Private Limited  
India Office:- H-08, Mansarovar Industrial Area, Mansarovar, Jaipur 302020, Rajasthan, India  
Phone: +91-9414046706; +91-141-2395481; Email: info@onecert.net  
USA Office: OneCert Inc., 1021 D Street, Lincoln, NE 68502, USA.  
Phone: (402) 420-6060, Fax: (888) 475-6044  
Web: www.onecert.com, www.onecertinternational.com

### Scope Certificate

N° ONE-3969-200922-T-OCS

OneCert International declares that

**Jiangsu Soho Economic Development Co., Ltd**  
License Number **ONE-3969**

No. 48 Ningnan Rd, Soho Plaza, Yuhuatai District,  
Nanjing City, Jiangsu Province,  
China

has been inspected and assessed according to the

**ORGANIC CONTENT STANDARD (OCS)**  
Version 3.0

and that products of the categories as mentioned below (and further specified in the product appendix) conform with this standard:

Product categories: **Apparel**

Processing steps / activities carried out under responsibility of the above-mentioned company for the certified products:

Trading & Manufacturing

This Certificate is valid until: **21 November 2021**

Place and Date of Issue Stamp of the Issuing Body  
Jaipur, Rajasthan, India; 22 September 2020

Sandeep Bhargava  
OneCert®  
ORGANIC CERTIFIED  
ORGANIC

This Scope Certificates provides no proof that any goods delivered by its holder are OCS certified. Proof of OCS certification of goods delivered is provided by a valid Transaction Certificate (TC) covering them. The issuing body may withdraw this certificate before it expires if the declared conformity is no longer guaranteed. Accredited by: IOAS, Accreditation N°: 89

This electronically issued document is the valid original version.  
Scope Certificate ONE-3969 & License number ONE-3969, Certificate of compliance, Page 1 of 3

3

## SCOPE CERTIFICATE

intertek

Total Quality. Assured.  
Intertek Testing Services NA, Inc.  
900 Chelmsford Street  
Lowell, MA, USA 01853

Intertek declares that

## JIANGSU SOHO ECONOMIC DEVELOPMENT CO., LTD

License Number: TJ2363

NO. 48 RUANJIANDADAO, NANJING, CHINA

has been inspected and assessed according to the:

## GLOBAL RECYCLED STANDARD 4.0 (GRS 4.0)

and that products of the categories as mentioned below (and further specified in the annex) conform with this standard:

Product categories: **Apparel**

Processing steps / activities carried out under responsibility of the above-mentioned company (by the operations as detailed in the annex) for the certified products:

Trading

Scope Certificate Number:  
TJ2363-G-4-2020-000821

Initial Certification Date:  
27 April 2020

Certificate Issue Date and Place:  
27 April 2020  
Lowell, MA, USA

Certificate Expiry Date:  
26 April 2021



Calin Moldovean

President, Business Assurance  
Intertek Testing Services NA, Inc.

# Sustainability

## Better Cotton Platform Transaction Record

**Important Note**  
This is not a certificate.

BCP Transaction Number BCPTR202201052187478

Seller	Buyer
Name JANGSU SOHO ECONOMIC DEVELOPMENT CO., LTD.	Name [Redacted]
Address 3rd Floor building A No.48 Ruanjian Da Dao Soho International Plaza Nanjing	Address [Redacted]
Country China	Country [Redacted]
BCP Number 1019586-1	BCP Number [Redacted]

Better Cotton Claim Units (BCCUs) allocated against sale/purchase of End Product

Transaction status	Date transaction was entered	Number of BCCUs allocated to shipment*
Completed	2021-07-21	1000

**Season:**  
T3-SS22

Control Union Certifications B.V.  
Meeuwenlaan 4-6, 8011 BZ, Zwolle, Netherlands  
+31 38 426 0100  
www.controlunion.com

## SCOPE CERTIFICATE

Scope Certificate Number: CU8519830CS-2021-00071953

Control Union Certifications declares that  
**Jiangsu Rongxu Textile Co., Ltd.**  
License Number: 851983  
Group 43, Yimeng Village, Chengnan Industrial Zone, Rudong Town  
Nantong, Jiangsu  
China

has been inspected and assessed in accordance with the  
**Organic Content Standard (OCS)**  
- Version 3.0 -

and that products of the categories as mentioned below (and for their specified in the appendix) comply with this standard.

Product categories: Dyed fabrics

Processing steps / activities carried out under responsibility of the above-mentioned company by the operations as detailed in the appendix for certified products:

Trading, Weaving

This certificate is valid until:  
2021-07-21  
This certificate is valid until:  
2022-07-20

Place and date of issue:



2021-07-22, Zwolle





IDFL LABORATORY AND INSTITUTE

## SCOPE CERTIFICATE

Scope Certificate Number: 21-329805

IDFL declares that

**Shaoxing Qujia Textile Co., Ltd.**  
LICENSE NUMBER 008598

Room 803, Building 1, Textile Trade Center, No.2998, Jinkeqiao Road, Keqiao,  
Shaoxing, Zhejiang  
China

has been inspected and assessed according to the

**Global Recycled Standard (GRS)**  
- Version 4.0 -

and that products of the categories as mentioned below (and further specified in the appendix) conform with this standard.

Product Categories: Dyed Fabrics (PC0025)

Processing steps / activities carried out under the responsibility of the above-mentioned company for the certified products: Trading (PR0030)

This Certificate is valid until: 27 Apr. 2022

Place and Date of Issue  
Hangzhou, 27 Apr. 2021



Willard Lieber, CEO  
IDFL Laboratory and Institute  
4F, No. 163 Wan Haa Rd. Sec. 2  
Banqiao District, New Taipei City

Stamp of Issuing Body  
IDFL License No: GRS-IDFL-19





Global Recycled Standard  
©TextileExchange

This Certificate of Compliance provides no proof that any goods delivered by its holder are Global Recycled Standard (GRS) certified. Proof of Global Recycled Standard (GRS) certification of goods delivered is provided by a valid Transaction Certificate (TC) covering them. The issuing body can withdraw this certificate before it expires if the declared compliance is no longer guaranteed.

This electronically issued document is the valid original version.  
Scan QR Code to verify certificate.





IDFL LABORATORY AND INSTITUTE

## SCOPE CERTIFICATE

Scope Certificate Number: 20-324869

IDFL declares that

**Jiangsu Soho (Myanmar) Industry Co., Ltd.**  
LICENSE NUMBER 008194

No. 95, Yaw Atwin Wun U Phoe Hlaing Street,  
Shwe Lin Ban Industrial Zone, Hlaing Thar Yar Township,  
Yangon  
Myanmar

has been inspected and assessed according to the

**Global Recycled Standard (GRS)**  
- Version 4.0 -

and that products of the categories as mentioned below (and further specified in the appendix) conform with this standard.

Product Categories: Men's Apparel (PC0001), Women's Apparel (PC0002), Babies' Apparel (PC0003)

Processing steps / activities carried out under the responsibility of the above-mentioned company for the certified products: Manufacturing (PR0019), Trading (PR0030), Exporting (PR0030), Importing (PR0030)

This Certificate is valid until: 24 Nov. 2021

Place and Date of Issue  
Hangzhou, 01 Apr. 2021



Willard Lieber, CEO  
IDFL Laboratory and Institute  
4F, No. 163 Wan Haa Rd. Sec. 2  
Banqiao District, New Taipei City

Stamp of Issuing Body  
IDFL License No: GRS-IDFL-19





Global Recycled Standard  
©TextileExchange

This Certificate of Compliance provides no proof that any goods delivered by its holder are Global Recycled Standard (GRS) certified. Proof of Global Recycled Standard (GRS) certification of goods delivered is provided by a valid Transaction Certificate (TC) covering them. The issuing body can withdraw this certificate before it expires if the declared compliance is no longer guaranteed.

This electronically issued document is the valid original version.  
Scan QR Code to verify certificate.



# Manufacturing capacities--Myanmar

Jiangsu SOHO (Myanmar) Industry Co., Ltd



# Manufacturing capacities--Myanmar

- \* TOTAL WORKERS:1000
- \* PRODUCTION CAPACITY PER MONTH:200000PCS
- \* PRODUCTION COVERS:LADIES', KIDS'  
BLOUSE/DRESS/SKIRT/JUMPSUIT/JACKET/PANT/COAT



# Manufacturing capacities--Cambodia

## SOHO SHENGHE(CAMBODIA) GARMENT CO.,LTD



### GOLD CERTIFICATE OF COMPLIANCE

#### Soho Sheng He (Cambodia) Garment Co., Ltd.

WRAP #: 19314

Certification Period: December 11, 2020 to December 11, 2021

Facility Address: No. 21, Plov Lum, Phum Ang  
Sangkat Chom Chao, Khan Porsenchey  
Phnom Penh  
Cambodia

Production Processes: Raw Materials, Cutting, Sewing, Ironing, Inspection, Packing, and Shipping

Sample Size: 30

Average Weekly Hours in Periods Reviewed: March 2020: 55 July 2020: 57 September 2020: 52

*Please refer to the full audit report for details.*

Avedis H. Seferian  
President & CEO



Charles C. Masten  
Chairman

Subject to the terms and conditions of the WRAP Certification Program and full compliance with the WRAP Production Principles

# Manufacturing capacities--Cambodia

- \* TOTAL WORKERS:800
- \* PRODUCTION CAPACITY PER MONTH:300000PCS
- \* PRODUCTION COVERS:LADIES' , KIDS' T-SHIRT/VEST/JUMPSUIT/JACKET/PANT/COAT/PANT/POLO T-SHIRT



# Manufacturing capacities--China

## CHANGZHOU HEPU APPAREL CO., LTD



**Producer:** Changzhou Hepu Apparel Co., Ltd.

DBID : 382285 and Audit Id : 190315

Audit Date : 24/09/2020

Audit Type : Follow-up Audit



### Audit Details

Audit Range :	<input type="checkbox"/> Full Audit	<input checked="" type="checkbox"/> Follow-up Audit	
Audit Scope :	<input checked="" type="checkbox"/> Main Audittee	<input type="checkbox"/> Main Audittee & Farms	
Audit Environment :	<input checked="" type="checkbox"/> Industrial	<input type="checkbox"/> Agricultural	<input type="checkbox"/> Small Producer
Audit Announcement :	<input checked="" type="checkbox"/> Fully-Announced	<input type="checkbox"/> Fully-Unannounced	<input type="checkbox"/> Semi-Announced
Random Unannounced Check (RUC) :	No		
Audit extent (if applicable) :	none		
Audit interferences or contingencies (if applicable) :	none		
Overall rating :	C		
Need of follow-up :	If YES, by :		

### Rating per Performance Area (PA)

PA 1	PA 2	PA 3	PA 4	PA 5	PA 6	PA 7	PA 8	PA 9	PA 10	PA 11	PA 12	PA 13
D	A	A	A	B	D	A	A	A	A	A	A	B

### Executive summary of audit report

Changzhou Hepu Apparel Co., Ltd. was located at No. 58, Zhongxing Road, Jintan District, Changzhou City, Jiangsu Province, China. The number of factory business license was 91320413MA1W3JQP6W, it was founded on 07 Feb 2018, its main products were apparel. The main processes were cutting, sewing, ironing, inspecting and packing in the factory. There was no obvious peak season in the factory. The audited factory used the first, second and fourth floors of one 4-storey building for workshop, warehouse and office. The kitchen and canteen were used by the audited factory and Jiangsu Pursuit Apparel Co., Ltd. together.

The normal working hours of all workers were 8 hours per day, 5 days per week, all production workers had one shift which from 07:30 to 17:00 with 1.5 hours lunch time(11:00-12:30), there was 1 hour overtime on most weekdays and 9 hours overtime on most Saturdays. All workers had one day off per seven days.

All workers were paid by hourly rate, the minimum wage was above local minimum wage RMB 1630 per month. Workers' wage was paid on 20th of each following month by bank transfer and cash. There were total 255 employees, contained 83 employees who reach to retirement age. The factory only provided five kinds of social insurance for 135 employees. The factory provided commercial injury insurance for other employees who do not have social insurance.

Wang Ping (Office Director), Ma Lanying (Factory Manager) and Ma Huimei (Worker representative) attended opening meeting and closing meeting. All of the interviewees showed cooperative attitude, effective evidence was collected during the workers interview. The management showed a cooperative attitude during the audit. They agreed auditor conducted whole audit including workplace observation and confidential workers interview without any influence. And they were willing to take corrective action for the findings identified during the audit. Ma Ping and Ma Huimei had signed the onsite CAP and ensured the preliminary completion date.

Remark: The audited factory rented the first, second and fourth floors of one 4-storey building from Changzhou Yingshan Garment Co., Ltd. The audited factory provided the lease contract and the landlord's business license. The third floor of this building was currently used by Jiangsu Pursuit Apparel Co., Ltd. for clothing sample making and office. Jiangsu Pursuit Apparel Co., Ltd. was one of the shareholders of the audited factory. There was one 4-storey dormitory building next to the factory building. There was separate door to enter the dormitory. Through management interviews, employee interview and document review, some employees live in it, and employees signed rental agreement with landlords separately.

This audit was conducted by Uha Chen(RA21702007).

# Manufacturing capacities--China

- \* TOTAL WORKERS:300
- \* PRODUCTION CAPACITY PER MONTH:120000PCS
- \* PRODUCTION COVERS:LADIES' , MEN' S, KIDS' BLOUSE/DRESS/SKIRT/JUMPSUIT/JACKET/PANT/COAT



# Manufacturing capacities--China

## AHHUI SIDA SILK GARMENTS CO.,LTD.



### Monitoring result for Anhui Sida Silk Garments Co.,Ltd. on site Site 1



#### Monitoring

Monitored Party	: Anhui Sida Silk Garments Co.,Ltd.	amfori ID	: 156-01 2338-000
Site	: Site 1	Site amfori ID	: 156-01 2338-001
Address	: Jinzhan Road, Yuqiao Village, Changji Town, Huoqiu County, Lu'an City, Anhui Province	Monitoring Activity	: amfori Social Audit - Manufacturing
	: 237400, Lu'an	Monitoring Type	: Full Monitoring
	: Anhui Sheng	Submission Date	: 10/06/2021
	: China	Expiration Date	: 10/06/2022

This is an extract of the online monitoring result, generated on 10/06/2021, and is only valid as an acknowledgement of the result. To see all the details, review the full monitoring result, which is available [here](#). The English version is the legally binding one.

amfori does not assume any liability with regard to the compliance of this extract, or any variations of this extract with the Regulation (EU) 2019/973 (General Data Protection Regulation).  
All rights reserved. No part of this publication may be reproduced, translated, stored in a retrieval system, or transmitted, in any form or by any means electronic, mechanical, photocopying, recording or otherwise, be lent, re-sold, hired out or otherwise circulated without the amfori consent. © amfori 2021

#### Overall rating



#### Section rating

PA1: Social Management System	D
PA 2: Workers Involvement and Protection	C
PA 3: The Rights of Freedom of Association and Collective Bargaining	A
PA 4: No Discrimination	A
PA 5: Fair Remuneration	B
PA 6: Decent Working Hours	D
PA 7: Occupational Health and Safety	B
PA 8: No Child Labour	A
PA 9: Special Protection for Young Workers	A
PA 10: No Precarious Employment	A
PA 11: No Bonded Labour	A
PA 12: Protection of the Environment	A
PA 13: Ethical Business Behaviour	A

# Manufacturing capacities--China

- \* TOTAL WORKERS:200
- \* PRODUCTION CAPACITY PER MONTH:100000PCS
- \* PRODUCTION COVERS:LADIES' , KIDS'  
BLOUSE/DRESS/SKIRT/JUMPSUIT/JACKET/PANT/COAT



OPPO Reno Z

# Garments produced in Myanmar--Blouse



# Garments produced in Myanmar--Blouse



# Garments produced in Myanmar--Blouse



# Garments produced in Myanmar--Dress



# Garments produced in Myanmar--Trousers



# Garments produced in Cambodia--Knit Shirt



# Garments produced in Cambodia--Knit Shirt



# Garments produced in Cambodia--Knit Shirt



# Garments produced in Cambodia--Knit Shirt



# Garments produced in Cambodia--Knit Dress

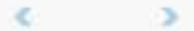


# Garments produced in Cambodia--Homewear



# Our Product--Made in China

## Womenswear



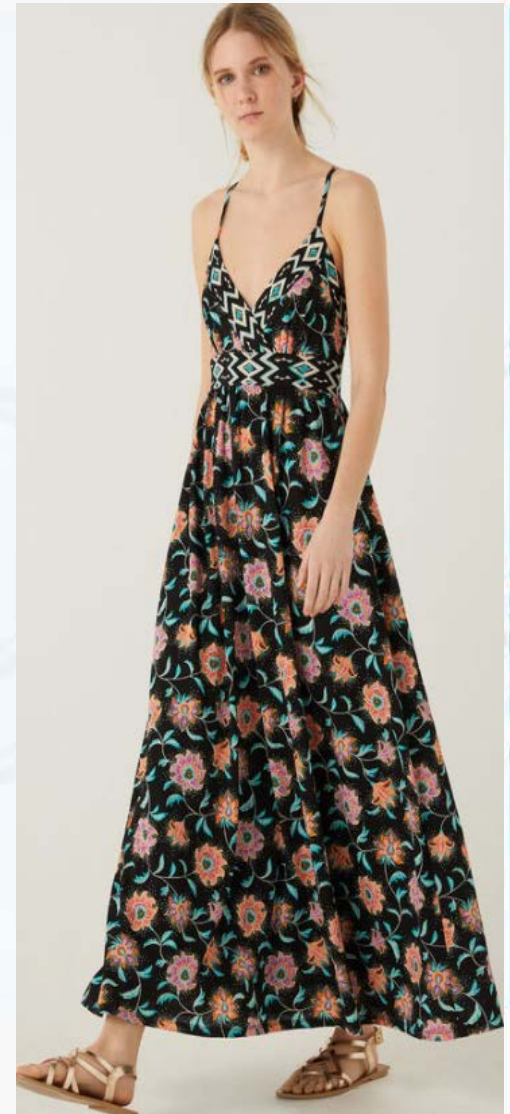
# Our Product--Made in China

## Womenswear



# Our Product--Made in China

## Womenswear



# Our Product--Made in China

## Womenswear



# Our Product--Made in China

## Womenswear



# Our Product--Made in China

## Womenswear



# Our Product--Made in China

## Womenswear



# Our Product--Made in China

## Womenswear



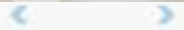
# Our Product--Made in China

## Womenswear



# Our Product--Made in China

## Womenswear



# Our Product--Made in China

## Womenswear



# Our Product--Made in China

## Womenswear



# Our Product--Made in China

## Menswear



# Our Product--Made in China

## Menswear



# Our Product--Made in China

## Accessories



# Our Product--Made in China

## Accessories



# Our Product--Made in China

swimwear



# Our Product--Made in China

beachswear



# Our Product--Made in China

activewear



# SOHO Clients

CORTEFIEL

PRIMARK

SPRINGFIELD

max

next

Lpp<sup>®</sup>  
S.A.

encuentro

nice things  
*Fabrice S.*

POLO  RALPH LAUREN

GUESS<sup>®</sup>  
U.S.A.  
WASHED ? JEANS  
1991 1983

JIANGSU SOHO ECONOMIC DEVELOPMENT CO.,LTD  
NO.48 RUANJIAN ROAD NANJING 210012 CHINA  
TEL: +86-25-84785586  
Email: [yimei@jssohoeco.com](mailto:yimei@jssohoeco.com)

